

# inLab

Advanced Analytics Platform for Process and Yield Insights

## BENEFITS

- **Unified Data Ecosystem:** Integrated data from various sources such as process tools, inspection tools, and test data for a holistic understanding of the manufacturing process.
- **Advanced Algorithms:** Powered by Machine Learning and AI capabilities to streamline your data analysis and decision-making process with unprecedented effectiveness.
- **Enhanced Data Visualization:** Clear and intuitive data visualization and summaries to help engineers quickly understand complex data and make informed decisions with confidence.
- **Ease of use:** Both options are available - a low-level deep dive for detailed analysis or a high-level interface for a quick route towards the first hypothesis, without requiring extensive training.

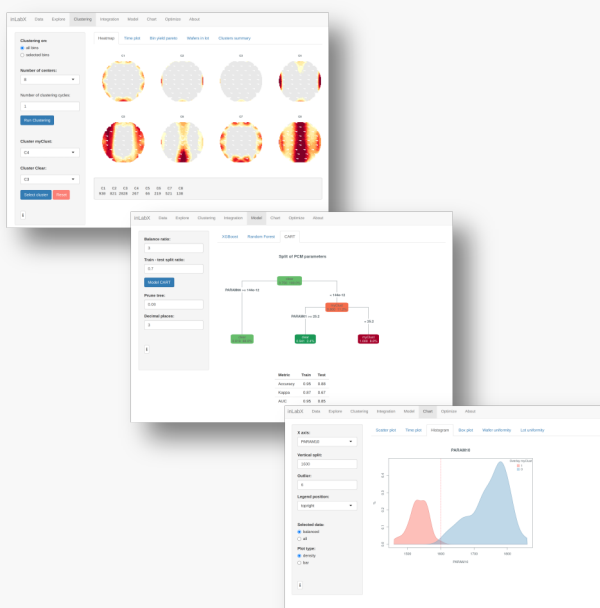
## TECHNOLOGIES

- Flexible deployment options are available, either as a cloud-based solution or an on-premises setup.
- inLab sits on top of customer's data warehouses and is designed to integrate with highly constrained, legacy systems.
- Ensured data security and compliance with industry standards and regulations.

## APPLICATIONS

- Root cause analysis of yield excursions including hypothesis suggestion for process adjustments.
- Pattern recognition and wafer map classification.

## ANALYTIC WORKFLOW



## MARKETS

- IDM
- Fabless

## GET IN TOUCH

- [contact@inferencetech.com](mailto:contact@inferencetech.com)
- +420 702 066 383

